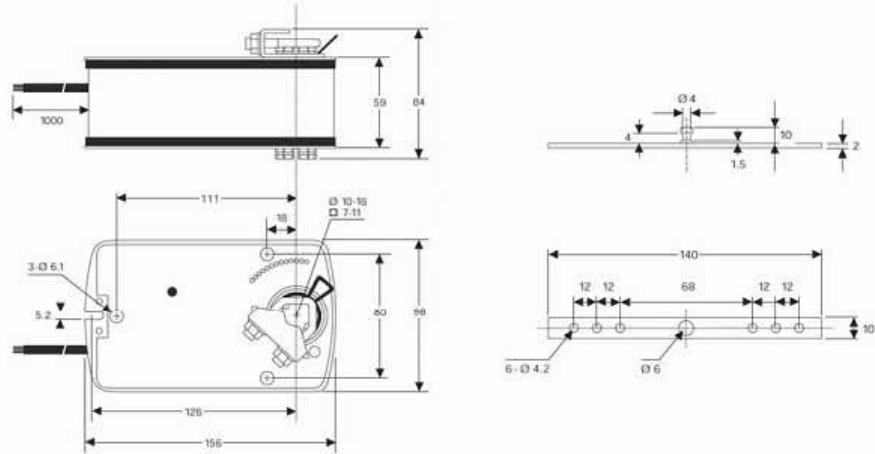
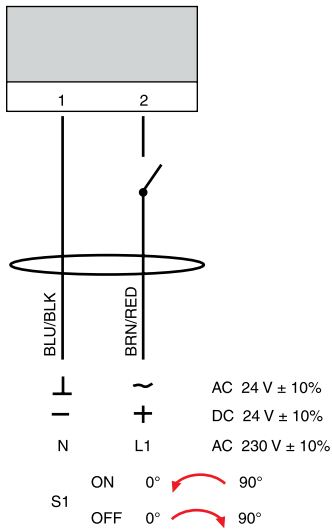


## ESDO6105 Spring Return Damper Actuators

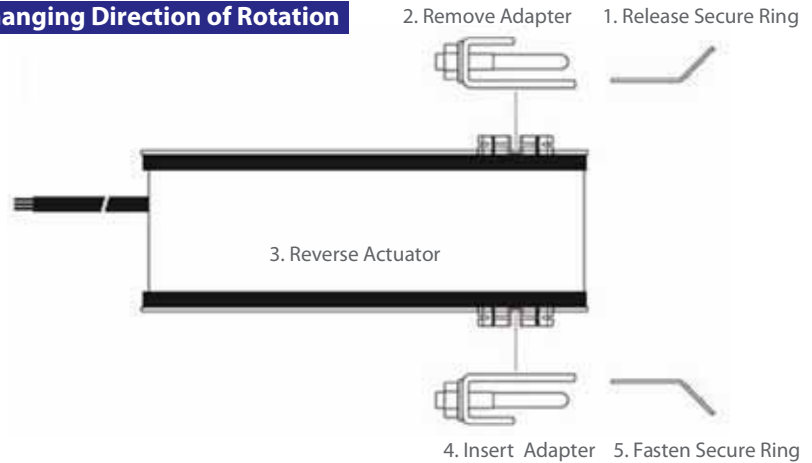
### Actuator Dimensions (mm)



### Wiring Diagram

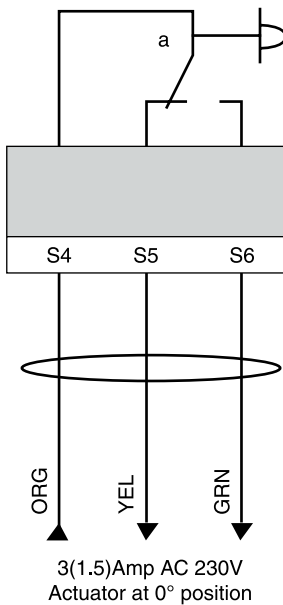


### Changing Direction of Rotation

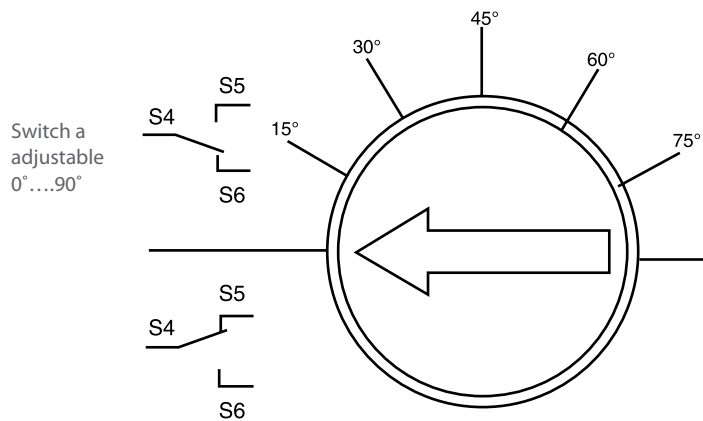


⚠ AC/DC 24V: Connect via safety isolating transformer.  
 AC 230V: To isolate from the main power supply, the system must incorporate a device which disconnects the phase conductors (with a least a 3 mm contact gap)

### Auxiliary Switches



### Auxiliary Switches adjustment



Built-in Micro Switch Adjustment  
 Turn the screw from 0°...90° according to the scale

## Product Application Reference Dimensions (mm)

### Angle of Rotation Limiting

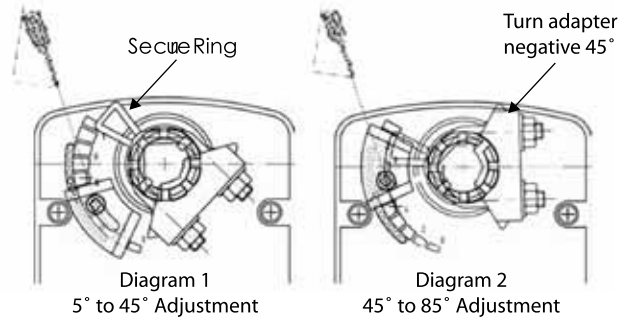
For 5° to 45° Adjustment (Diagram 1)

1. Loosen Screw of the mechanical limiter plate.
2. Move the limiter plate to the appropriate position.
3. Tighten the screw .

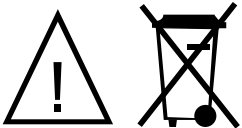
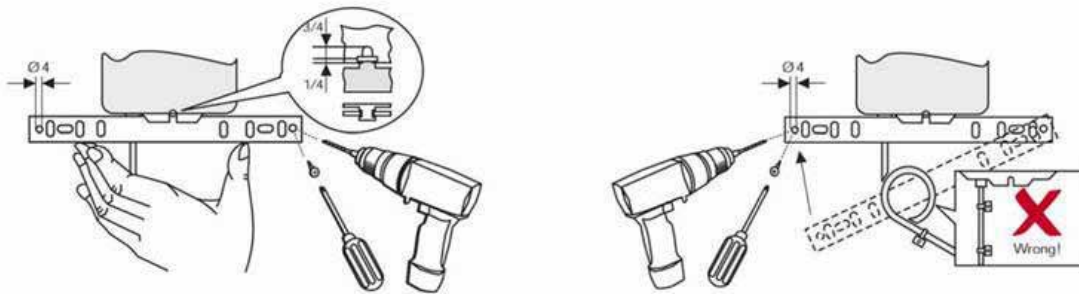
For 45° to 85° Adjustment (Diagram 2)

1. Release the secure ring of the adapter.
2. Remove the adapter and turn negative 45° as shown.
3. Insert adapter and secure the adapter ring.
4. Loosen screw of the mechanical limiter plate
5. Move the limiter plate to the appropriate position

### Angle of Rotation Limiting 5° to 85° adjustment



### Installation / Mounting Instruction



This device contain electrical and electronic components and may not be disposed as household garbage. Please consult your local authority for proper disposal.