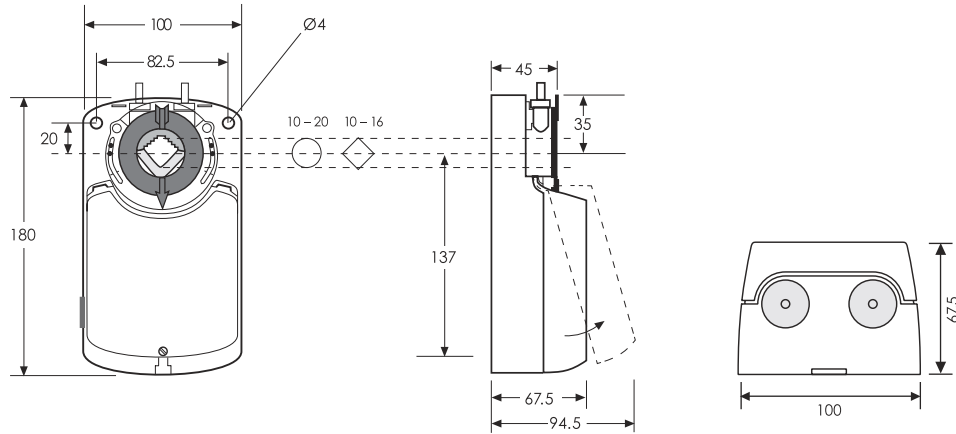
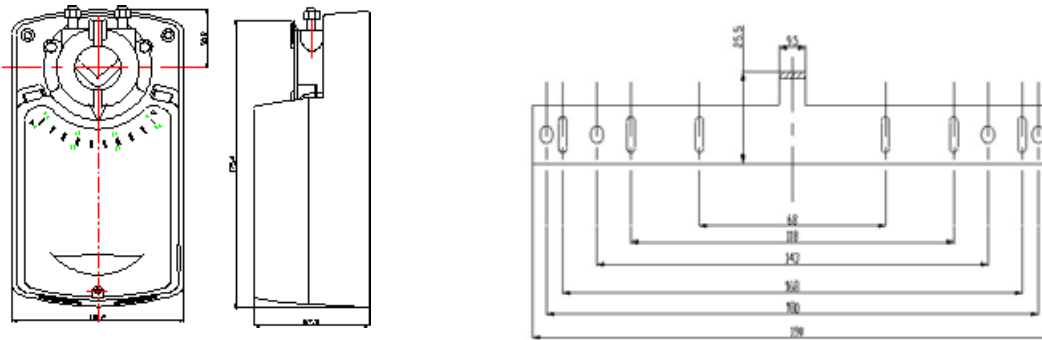


## EDAM(O)6108/6116/6124 Rotary Air Damper Actuators



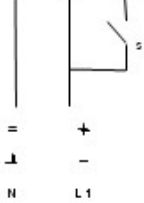
## EDAO(M) 6108//6116/6124 Rotary Air Damper Actuators Dimensions



### Wiring diagram

#### EDAO-6108/6116/6124

2-point

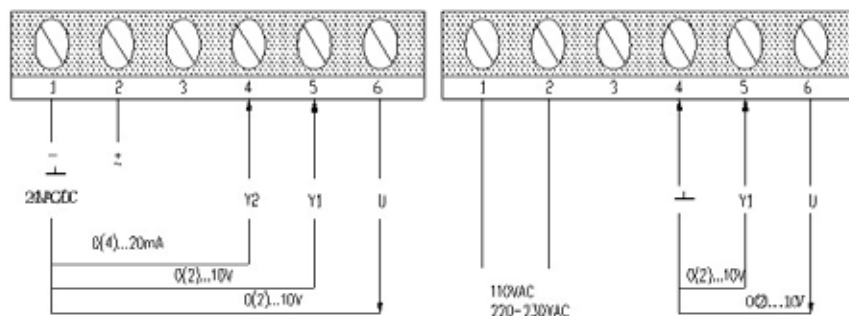


24VDC  $\pm 10\% \pm 1$   
 24VAC  $\pm 10\% \pm 1$

3-point



#### EDAM -6108/6116/6124



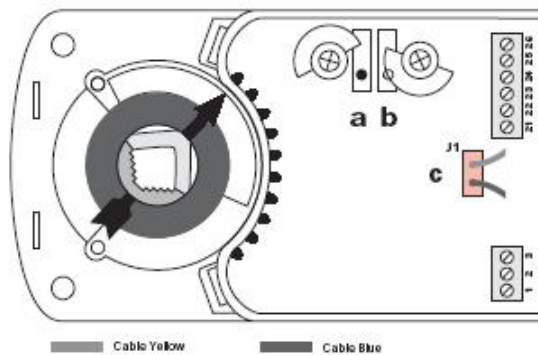
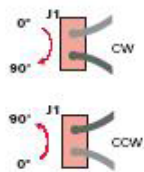
## Auxiliary switches



**3(1.5)Amp 230v**  
**Actuator at 0 position**

## Selection of rotating direction EDAO-6108/6116/6124

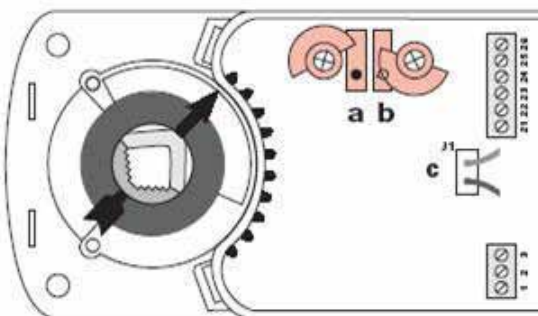
The direction of rotation can be changed by reversing plug **c**  
 Factory setting



## EDAM-6108/6116/6124

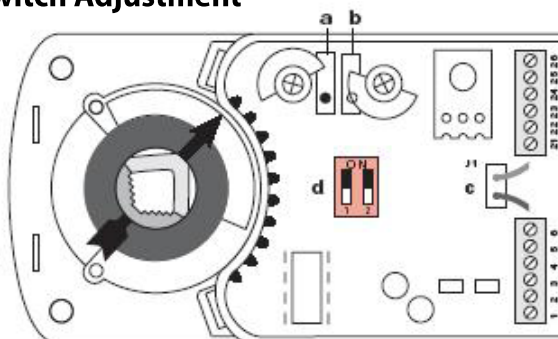
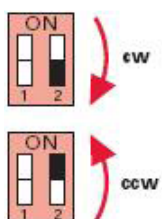
Factory setting  
 Switch **a** at 10°  
 Switch **b** at 80°

The switching position can be manually changed to any required position by turning the ratchet.



## Auxilliary Switch Adjustment

Microswitch **d**



Plug (c) must never be reversed otherwise the motor will not function correctly.